

LightRidge

RESOURCES

PE-Advisor™

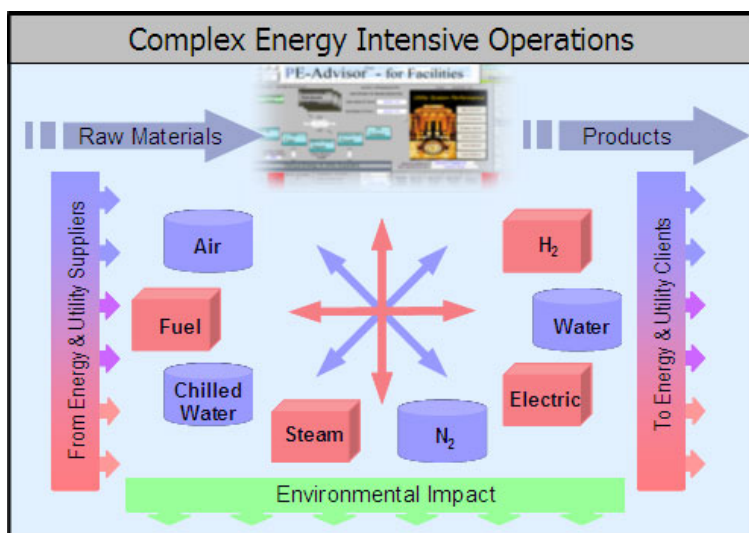
Energy & Utilities Performance Management Solution

PE-Advisor™ models and optimizes (Historical, Real-time and Predictive):

- Complex integrated energy and utilities systems
- Commodity supply and off-take agreements and impacts
- Interfaces between processes/demands and utilities
- Environmental compliance, emissions and effluents tracking

PE-Advisor™ addresses and solves your operational and strategic issues:

- Challenges: high energy costs, volatile energy prices, complex utility systems that are constantly changing, fragmented/inaccurate information, equipment and systems inefficiencies, poor return on capital, loss of experience when people retire.
- Solution: monitors operations and financial performance; brings information together in an actionable form; improves efficiencies and overall site optimization; provides new insights on operations and reduces instrumentation errors; takes energy contracts and prices into consideration; monitors and optimizes emissions.
- Strategic asset planning: identify and evaluate capital projects or operating improvements that reduce energy and utilities costs and consumption.



Integrated, Site-Wide, Economic-Driven System



Bottom-line view of energy and utilities consumption, cost and movements.

Helps Reduce Energy and Utilities Consumption

PE-Advisor™ in District Energy Applications:

PE-Advisor™ helps owners and operators maximize profit through improved operational and strategic decision making.

Gain Real-time Insight of Site-wide Energy/Utility Infrastructure

- Monitor integrated energy/utility systems' performance (mass, energy and cost)
- Reduce errors by verifying and imposing accuracy in plant metering and control systems
- Allocate energy/utility costs to demand/product areas
- Track operating characteristics like degradation

Optimize Energy/Utilities Systems Operation

- Generate operating savings (3-5% of purchased energy)
- Determine best application of energy/utility resources
- Incorporate environmental limits for optimal decisions
- Identify and reduce inefficiencies in plant operations
- Determine optimal equipment maintenance cycles
- Track environmental impacts

Provide Operational "What-if" Scenarios

- Predict energy/utility supply requirements to manage supply contracts and hedges
- Marginal cost for real-time commodity buy/sell decisions
- Determine best response to changing demands on energy/utility system
- Evaluate cost impacts of operating decisions before taking action
- Perform forward-looking optimization analysis

User Interface

PE-Advisor is intuitive and highly flexible and was designed with the end-user in mind. Graphical and tabular inputs and results are easily managed and presented in a way that meets the needs of operators, plant engineers and management. "What-if" results are displayed on the same screen as plant measurements, which make it easy to compare results. Session runs and views can be saved and shared with colleagues, making collaborative work easier.

Contact Information:

Roger Hurst, *President*
LightRidge Resources, LLC
1111 N. Loop West, Suite 200, Houston, TX 77008
Phone: 713/862-0202 x242, Fax: 713/862-0211
roger.hurst@lightridgeresources.com

Identify and Analyze Projects That Impact the Energy/Utility Infrastructure

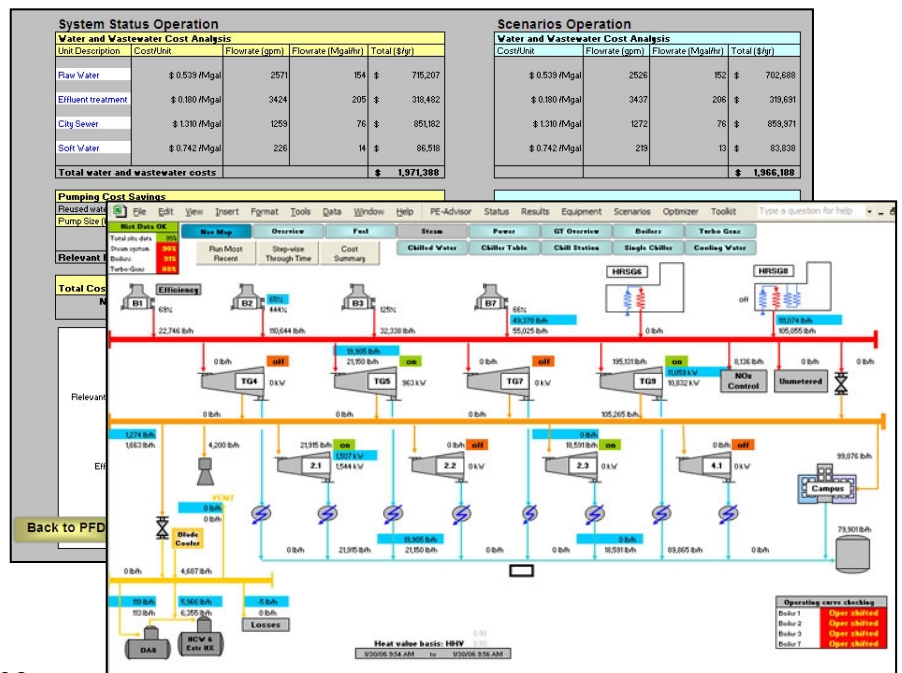
- Evaluate project design impacts on site-wide utility systems
- Perform "what-if" analysis to minimize future energy/utility consumption and costs
- Analyze trade-offs between initial capital and operating costs
- Determine site-wide environmental impacts of projects

Track and Verify Benefits and Results

- Track results and impacts of operating decisions
- Verify that planned benefits of projects are realized
- Track performance of PE-Advisor for verifiable ROI

Facilitate Collaborative Knowledge Management

- Improves personnel efficiency/productivity (e.g. resolves conflicts in data interpretation)
- Consolidates plant and financial information for common decision making
- Provides information to enterprise such as power market dispatch decisions
- Broadens organization knowledge base and captures best practices/experience



www.lightridgeresources.com

©2005 LightRidge Resources, LLC. All rights reserved.