



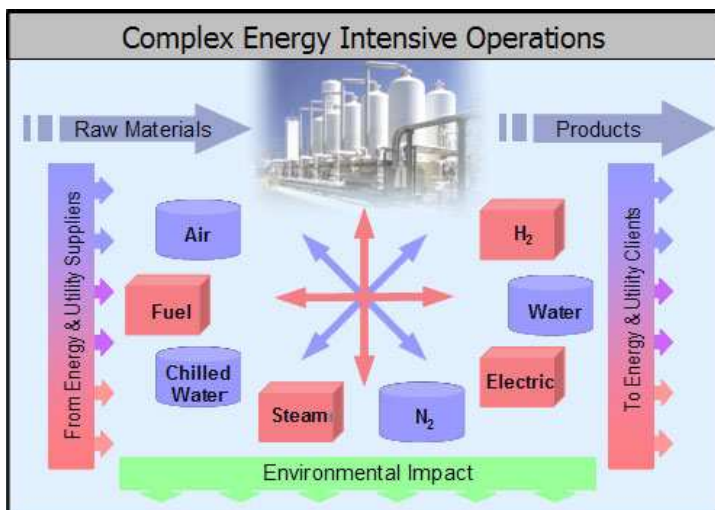
Energy & Utilities Performance Management Solution

PE-Advisor™ models and optimizes (Historical, Real-time and Predictive):

- Complex integrated energy and utilities systems
- Commodity supply and off-take agreements and impacts
- Interfaces between processes/demands and utilities
- Environmental compliance, emissions and effluents tracking

PE-Advisor™ addresses and solves your operational and strategic issues:

- Challenges: high energy costs, volatile energy prices, complex utility systems that are constantly changing, fragmented/inaccurate information, equipment and systems inefficiencies, poor return on capital, loss of experience when people retire.
- Solution: monitors operations and financial performance; brings information together in an actionable form; improves efficiencies and overall site optimization; provides new insights on operations and reduces instrumentation errors; takes energy contracts and prices into consideration; monitors and optimizes emissions.
- Strategic asset planning: identify and evaluate capital projects or operating improvements that reduce energy and utilities costs and consumption.



Integrated, Site-Wide, Economic-Driven System



Bottom-line view of energy and utilities consumption, cost and movements.

Helps Reduce Energy and Utilities Consumption

PE-Advisor™ in Process Manufacturing Plants:

PE-Advisor through its integrated systems and bottom-line view helps owners and operators of complex industrial facilities minimize energy and utilities costs through the following:

Gain Real-time Insight into Equipment, Systems and Unit Performance

- Monitor performance of site-wide integrated systems by tracking efficiencies, financial performance and other performance parameters.
- Diagnose measurement errors with comprehensive mass and energy balance cross-checking for more accurate information about your plant, leading to better decision making.
- Allocate energy and utilities costs to demand/product/unit areas and track energy indices specific to such areas.
- Track equipment operating characteristics (e.g., degradation in efficiency) and optimize equipment cleaning and maintenance cycles.
- Monitor and track environmental impacts from operations. This may be used to support credits trading activities.

Leverages Organization

- Improves personnel productivity and efficiency through use of a common set of trusted data and a comprehensive analytical framework.
- Focuses organization to a site-wide bottom line.
- Broadens organization's knowledge base and captures best practices/experience.
- Tracks results of operating decisions which provides feedback for further learning.

User Interface

PE-Advisor is intuitive and highly flexible and was designed with the end-user in mind. Graphical and tabular inputs and results are easily managed and presented in a way that meets the needs of operators, plant engineers and management. "What-if" results are displayed on the same screen as plant measurements, which makes it easy to compare results. Session runs and views can be saved and shared with colleagues, making collaborative work easier.

Contact Information:

Roger Hurst, *President*
 LightRidge Resources, LLC
 1111 N. Loop West, Suite 200, Houston, TX 77008
 Phone: 713/862-0202 x242, Fax: 713/862-0211
roger.hurst@lightridgeresources.com

Perform Operational "What-if" Scenarios

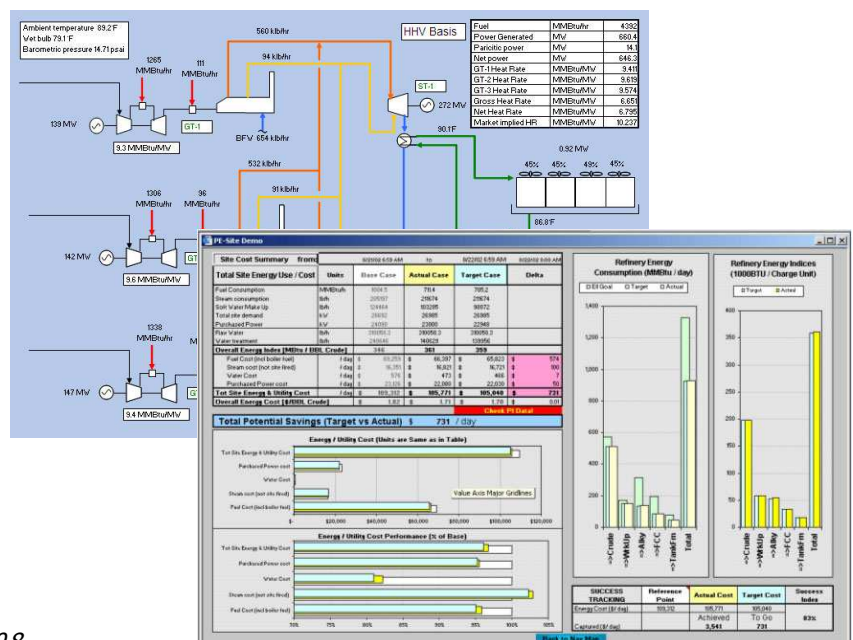
- Evaluate cost impacts of operating decisions before taking action.
- Determine best response to changing demands on energy and utilities systems.
- Predict site's energy and utilities supply requirements to proactively manage supply contracts and hedges.

Optimize Energy/Utilities Systems Operation

- Determine best site-wide combination of energy commodities options and utilities equipment use in response to operating conditions.
- Incorporate environmental constraints and economic impacts for optimal decisions.

Identify and Analyze Projects

- Evaluate proposed projects using the operations framework as a basis, automatically taking into account the interactions of site-wide systems.
- Use historical operating conditions to analyze project impacts over time.
- Analyze trade-offs between initial capital and ongoing operating costs.
- Determine site-wide environmental impacts of projects.
- Verify that predicted benefits of projects are realized.



www.lightridgeresources.com

© 2009 LightRidge Resources, LLC. All rights reserved.